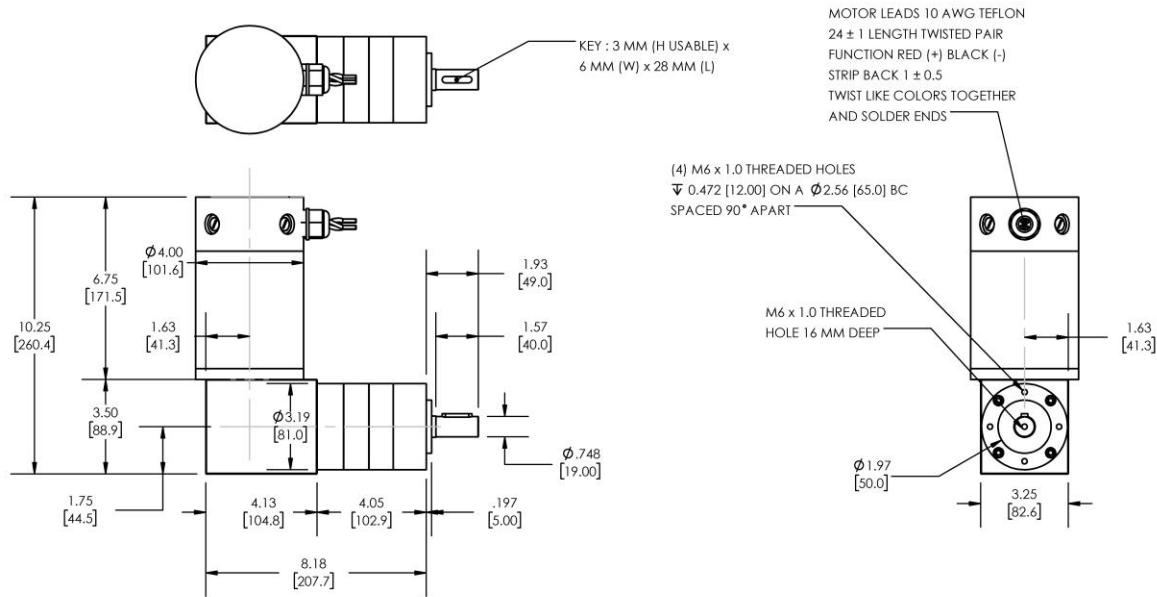


**Model Number:**

**MMP D40-675D-36V GRA81-068**



DIMENSIONS ARE INCHES [MM] UNLESS OTHERWISE STATED

PLANETARY GEARMOTOR OUTPUT PARAMETERS:	VALUE	UNITS	TOLERANCE
Gearhead Ratio (exact)	68.06 : 1		
Gearhead Shaft Output Speed (at full-load)	44	RPM	MAX
Gearmotor Rated Continuous Torque	435	In-Lbs	MAX
Gearmotor Rated Peak Torque	<b>2124++</b>	In-Lbs	----
Gearhead Standard Backlash	36	Arc Minutes	MAX
Gearhead Efficiency	70%	----	----
Output Shaft Radial Load Capacity	225	Lbs	MAX
Output Shaft Axial Load Capacity	45	Lbs	MAX
Gearmotor Total Weight	22	Lbs	MAX

**++ All Peak Torque values are dependent upon duty. Contact our sales office for details.**

DC MOTOR PERFORMANCE PARAMETERS:	VALUE	UNITS	TOLERANCE
Rated DC Voltage	36	DC VOLTS	----
Rated Continuous Current	12.1	AMPERES	----
No-Load Speed	3333	RPM	MAX
Rated Speed	3007	RPM	+/- 15%
Rated Continuous Power Out	324	WATTS	+/- 15%
Rated Continuous Torque	146	OZ-IN	----
Peak Torque (motor only)	1203	OZ-IN	----
No-Load Current	2.11	AMPERES	MAX
Back EMF Constant (Ke)	10.8	V/KRPM	+/- 10%
Torque Constant (Kt)	14.6	OZ-IN/AMP	+/- 10%
DC Armature Resistance	0.29	OHMS	+/- 15%
Armature Inductance	0.17	mH	+/- 15%
Armature temperature	155	DEG. C	MAX

**NOTES:**

- ENCODER & BRAKE OPTIONS AVAILABLE - [FOLLOW THIS LINK FOR DETAILS](#)
- NEMA MOUNTING FLANGE OPTION AVAILABLE - [FOLLOW THIS LINK FOR DETAILS](#)

## MIDWEST MOTION PRODUCTS, INC

DESIGN, MANUFACTURING & DISTRIBUTION - MOTION CONTROL EQUIPMENT

[www.midwestmotion.com](http://www.midwestmotion.com)

email: [sales@midwestmotion.com](mailto:sales@midwestmotion.com)